

2K x 2K X-ray Camera with CameraLink® or GigE Output

Features

- X-Ray energy sensitivity varies between 5 to 120 keV
- CameraLink® or GigE output
- 2K x 2K Sensor for high resolution and large x-ray field of view
- Customizable diameter fiber tapers available
- Expected lifetime of CCD greatly enhanced via use of FO coupling
- Individually built and tested by experts

Applications

- X-Ray Inspection
- Military Technology
- Optical Inspection at Close Proximity
- Magnification Applications
- PCB Inspection

X-ray Camera with a 70mm Diameter Fiber Taper (Custom Diameters Available on Request) and a Gadolinium Oxysulphide (GdOS) Scintillation Layer. Perfect for Inexpensive Inspection Instruments Where Cost is a Factor.



Overview

The Fiber Cam II represents a new way to capture X-ray images with standard CCD sensors. The Fiber Cam II is a CCD Camera with a fused fiber optic taper that is attached directly to the image sensor with proprietary technology.

Our GdOS scintillation layer is applied directly to the surface of the fiber-optic bundle for maximum efficiency using our proprietary technology. The camera ships with a thin aluminized window to protect this layer from scratches.

The Fiber Cam II is designed for OEMs who wish to use a *standard camera with X-Ray sources*. Using this technology the GdOS layer is several inches away from the sensor and will thus reduce the rate of sensor deterioration.

Specifications

CCD Size:	1"
Pixels:	2048 (H) x 2048 (V)
Cell Size:	7.4 (H) x 7.4 (V) um
Aspect Ratio:	1:1
Digital Format:	8/10/12 bit
Frame Rate:	11 fps to 20 fps
Shutter:	1/14000 – 7 seconds
Output:	CameraLink® or GigE
Power:	12V DC
Input Size:	50mm x 50mm (other sizes upon request)
Input Pixel Size (horizontal):	24.8 um
Limiting Resolution at: Input Window (depending on x-ray coating)	20 lp/mm
Energy Range:	5 to 120 KeV (can be optimized for certain energy ranges)
Input Window Protective Cover:	Aluminized (other window materials available upon request)
Saturation Signal:	40,000 e-
Dimensions:	68 mm wide x 68 mm high x 129 mm deep Front of camera is about 80mm in diameter
Options:	<ul style="list-style-type: none">• Custom window materials for lower kV applications• Custom fiber optic diameter

NOTE: Customer must provide the X-ray source.

Sample Pictures

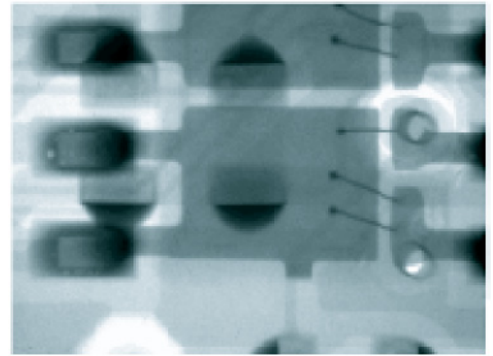


Image of printed circuit board with Fiber Cam II

Ordering Info

Fiber Cam II/Std: Standard unit camera with standard GdOS coating (balanced for resolution and max light output)

Fiber Cam II/Option 1: Without GdOS coating (for non-x-ray applications)

Fiber Cam II/Option 2: Custom protective input window material (e.g., aluminum, mylar)